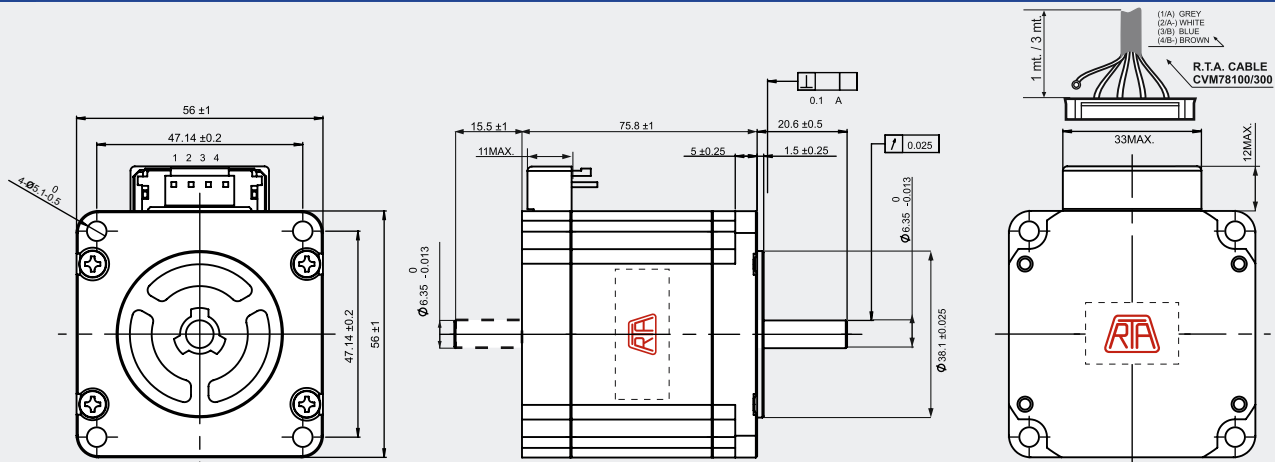


RH 2S2M

Dimensions (Unit:mm)



MOTOR CONNECTOR IS JST mod. B4P-VH 4 POLES MALE.
FOR CONNECTION USE JST mod. VHR-4N FEMALE CONNECTOR AND
mod. SVH-21 T-P1.1 CONTACTS.
NOTE: RH2S (RS) MOTORS NEED CVM78100 AND CVM78300
R.T.A. CABLES. CONTACT R.T.A. FOR FURTHER DETAILS.

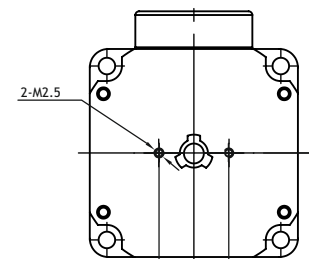
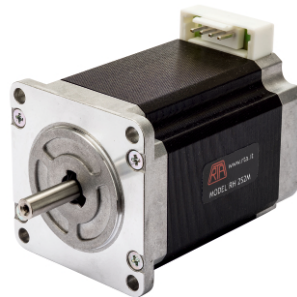
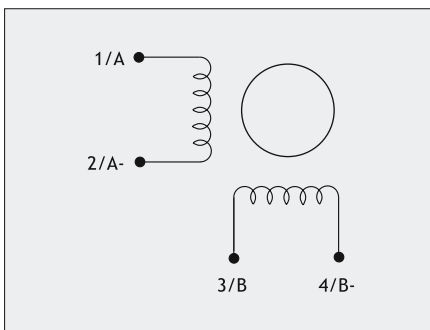
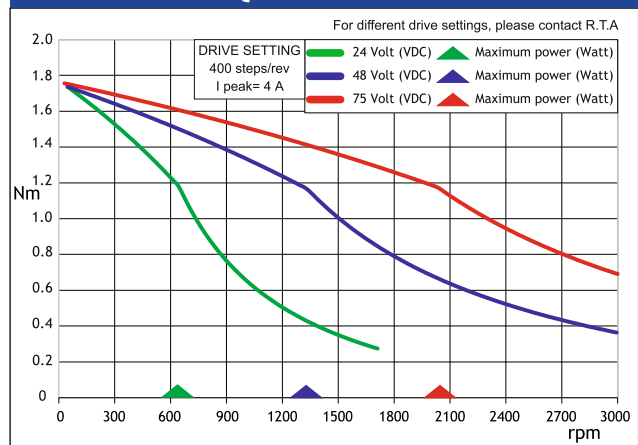
+ 40%
HOLDING TORQUE
THAN THE PREVIOUS «H» SERIES

FEATURES

MODEL	RH 2S2M (RH 2S2M-RS)	
BASIC STEP ANGLE	1.8 ± 0.09°	
BIPOLAR CURRENT	(Amp)	4.0
UNIPOLAR CURRENT	(Amp)	
RESISTANCE	(Ohm)	0.52
INDUCTANCE	(mH)	2.4
BIPOLAR HOLDING TORQUE	(Ncm)	235
ROTOR INERTIA	(Kg ^m × 10 ⁻⁷)	500
THEORETICAL ACCELERATION	(rad × sec ⁻²)	47000
BACK E.M.F.	(V/Krpm)	58.7
MASS	(Kg)	1.1
INTERNATIONAL STANDARDS	UL, CSA	
PROTECTION DEGREE	IP40	
LEADS CODE	V	

Codes between brackets refer to double shaft models.

TORQUE/SPEED CURVE



DOUBLE SHAFT MOTORS ONLY.

Suggested R.T.A. drive series: BSD, CSD, FLEX-DRIVE, NDC



R.T.A. s.r.l.
Via E. Mattei - Frazz Divisa
27020 Marcignago (PV) (Italy)
T +39.0382.929.855
F +39.0382.929.150
www.rta.it

R.T.A. Deutschland GmbH
Bublitzer Strasse 34, 40599
Duesseldorf (Germany)
T +49.211.749.668.60
F +49.211.749.668.66
www.rta-deutschland.de

R.T.A. IBERICA
C/Generalitat 22, Local 1
08850 Gava - Barcelona (Spain)
T +34 936.388.805
F +34 936.334.595
www.rta-iberica.es

R.T.A. INDIA Pvt
Teerth Business Center 3rd Floor, Unit No. 7,
Block EL-15, MIDC Bhosari Pimpri-Chinchwad,
Pune 411026 (India)
Tel. +91 9422507445
www.rta-india.in