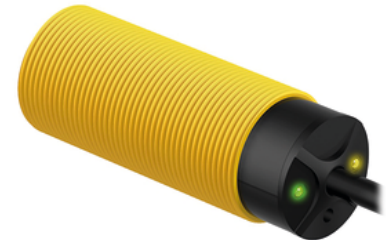
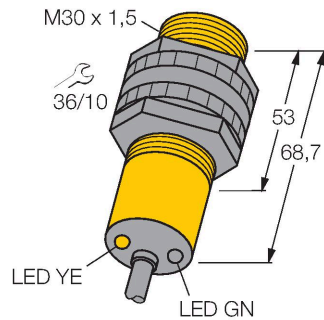


# S303E W/30

## Photoelectric Sensor – Opposed Mode Sensor (Emitter)



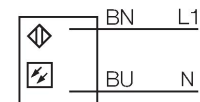
### Technical data

Type	S303E W/30
ID no.	3033897
<b>Optical data</b>	
Function	Opposed mode sensor
Operating mode	Emitter
Light type	IR
Wavelength	950 nm
Range	0...60000 mm
<b>Electrical data</b>	
Operating voltage	20...250 VAC
Readiness delay	≤ 100 ms
<b>Mechanical data</b>	
Design	Threaded barrel, S30
Dimensions	Ø 30 x 80.7 mm
Housing material	Plastic, Thermoplastic material
Lens	plastic, Acrylic
Electrical connection	Cable, 9 m, PVC
Number of cores	2
Ambient temperature	-40...+70 °C
Protection class	IP67
Special features	Encapsulated
Power-on indication	LED, Green
Excess gain indication	LED
<b>Tests/approvals</b>	
Approvals	CE, UL, CSA

### Features

- Cable, 2 m
- Protection class IP67
- Ambient temperature: -40...+70 °C
- Operating voltage: 20...250 VAC

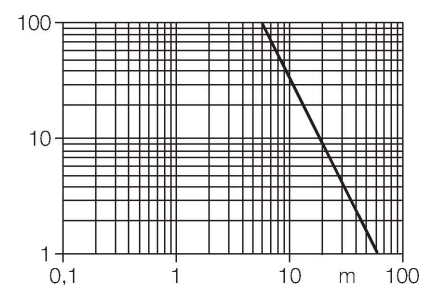
### Wiring diagram



### Functional principle

Opposed mode sensors consist of an emitter and receiver. They are installed opposite to each other so that the light from the emitter is aimed directly at the receiver. When an object interrupts or weakens the light beam, the sensor switches. Opposed mode sensors are the most reliable photoelectric sensors for detection of opaque targets. The excellent light/dark contrast and the high excess gain allow operation over larger distances and under difficult conditions.

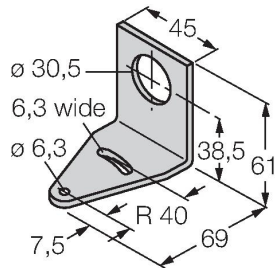
Excess gain curve  
Excess gain in relation to the distance



## Accessories

**SMB30A**

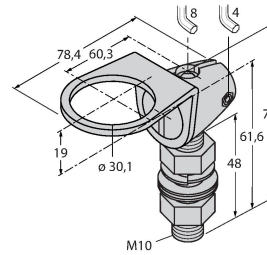
**3032723**



Mounting bracket, rectangular, stainless steel, for sensors with 30mm thread

**SMB30FAM10**

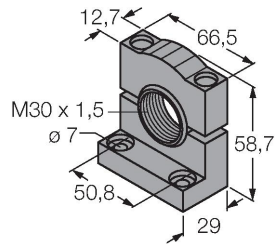
**3011185**



Mounting bracket, stainless steel, for M10 x 1.5 thread, thread length 30 mm

**SMB30SC**

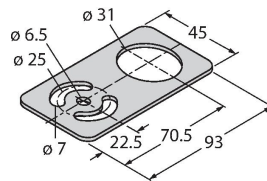
**3052521**



Mounting bracket, PBT black, for sensors with 30 mm thread, rotatable

**SMBAMS30P**

**3073135**



Mounting bracket, stainless steel, for sensors with 30 mm thread