

TL50BLZR2YBW

LED Indicator – Tower Light

Technical data

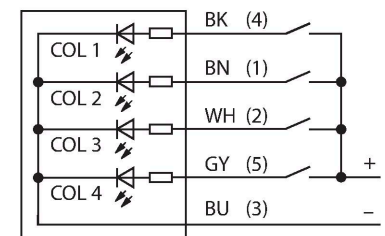
Type	TL50BLZR2YBW
ID	3097195
Signal and display data	
Purpose	LED indicator light
Function	Tower light
Light type	Red, flashing Yellow Blue White
LED service life (L70)	50000 h
Dimmable	No
Features of color 1	Red, Flashing, 24 lm
Features of color 2	Yellow, Permanently on, 15 lm
Features of color 3	Yellow, Permanently on, 15 lm
Features of color 4	White, Permanently on, 56 lm
Electrical data	
Operating voltage	85...264 VAC
AC rated operational current	≤ 70 mA
Max. current consumption per color	55 mA
Input type	AC
Response time typical	< 500 ms
Mechanical data	
Cascadable	No
Design	Smooth barrel, TL50BLZ
Dimensions	Ø 50 x 211.2 mm
Housing material	Plastic, ABS, Black
Window material	Polycarbonate, clear
Electrical connection	Cable, 2 m, PVC
Number of cores	5
Ambient temperature	-40...+50 °C
Relative humidity	0...95 %
Protection class	IP67
Tests/approvals	
Approvals	CE, UL listed



Features

- Plastic housing, black
- Protection class IP67
- EMI and RFI immune
- Colors: Red flashing (COL 1) / Yellow (COL 2) / Blue (COL 3) / White (COL 4)
- Operating voltage: 85...264 VAC

Wiring diagram



Functional principle

The rugged multifunction TL50 beacons are available in many variations and are easily mounted. They can be assembled from maximally four varicolored LEDs, with or without beeper. You can choose from three different lighting functions (steady, rotating, flashing). In the type code the lighting function is indicated after the color (without number: steady; 1: rotating; 2: flashing). Good visible display of status for indoor and outdoor applications.

The wiring diagram shows a PNP pin assignment

The type code indicates the 5 colors blue (B), green (G), red (R), yellow (Y) and white (W) in the same order in which they are arranged in the beacon, from bottom to top. Example: TL50GYRQ.