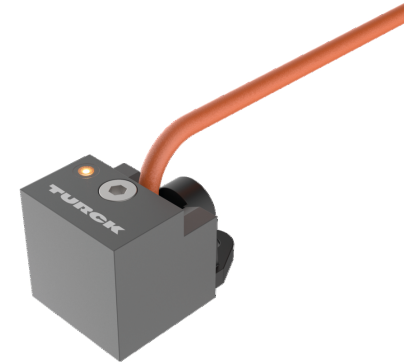
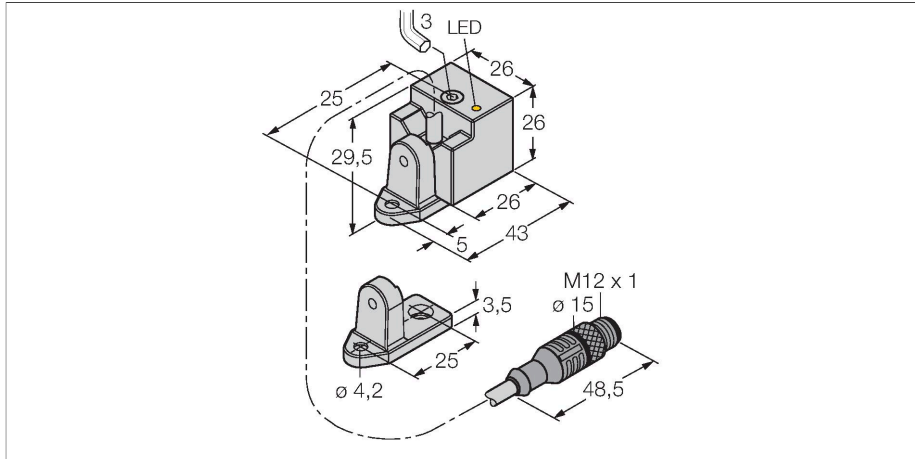


BI10-QN26-AD4X-0.15XOR-RS4.23/S100-S1589

Inductive Sensor – With Increased Temperature Range

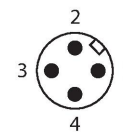
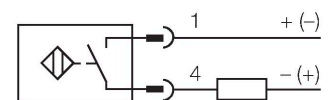


Technical data

Type	BI10-QN26-AD4X-0.15XOR-RS4.23/S100-S1589
ID	4470228
Remark to product	For use in France, please take the version with the W/BF adapter, ident. no. 4470229
Special version	Maximum ambient temperature = 100 °C WeldGuard™ coating
General data	
Rated switching distance	10 mm
Mounting conditions	Flush
Secured operating distance	$\leq (0.81 \times S_n)$ mm
Correction factors	St37 = 1; Al = 0.3; stainless steel = 0.7; Ms = 0.4
Repeat accuracy	$\leq 2 \%$ of full scale
Temperature drift	$\leq \pm 10 \%$ $\leq \pm 20 \%, \geq +70 \text{ °C}$
Hysteresis	1...15 %
Electrical data	
Operating voltage	10...65 VDC
Residual ripple	$\leq 10 \%$ U_{ss}
DC rated operational current	≤ 100 mA
Rated operational current	See derating curve
Residual current	≤ 0.6 mA
Isolation test voltage	≤ 0.5 kV
Short-circuit protection	yes / Cyclic
Voltage drop at I_a	≤ 5 V
Wire breakage/Reverse polarity protection	Complete

Features

- Rectangular, height 26 mm
- Variable orientation of active face in 4 directions
- Plastic, PBT-GF30-V0
- High luminance LED
- Coated housing suited for welding facilities
- Temperatures up to +100 °C
- DC 2-wire, 10...65 VDC
- NO contact
- Cable with male end

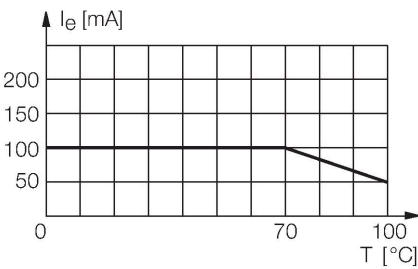


Functional principle

Inductive sensors detect metal objects contactless and wear-free. For this, they use a high-frequency electromagnetic AC field that interacts with the target. Inductive sensors generate this field via an RLC circuit with a ferrite coil.

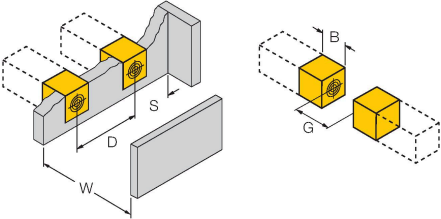
Technical data

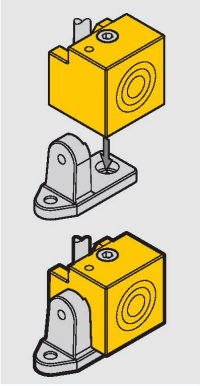
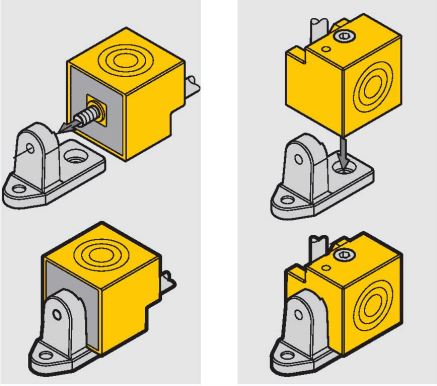
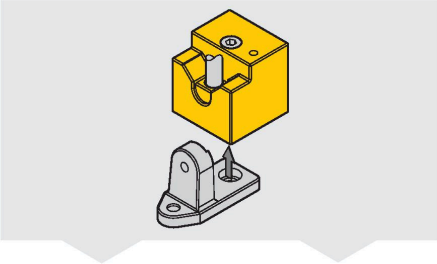

Output function	2-wire, NO contact, 2-wire
Smallest operating current	≥ 3 mA
Switching frequency	0.5 kHz
Mechanical data	
Design	Rectangular, QN26
Dimensions	43 x 26 x 26 mm
	variable orientation of active face in 4 directions
Housing material	Plastic, PBT-GF30-V0, Weldguard coated
Material coupling nut	metal, CuZn, PTFE-coated
Electrical connection	Cable with connector, M12 × 1
Cable quality	Ø 4.4 mm, Orange, Lif12Y11X, PUR, 0.15 m
Core cross-section	2 x 0.34 mm ²
Environmental conditions	
Ambient temperature	-25...+100 °C
Vibration resistance	55 Hz (1 mm)
Shock resistance	30 g (11 ms)
Protection class	IP67
Switching state	LED, Yellow
Included in delivery	turning angle



Mounting instructions

Mounting instructions/Description





Distance D	3 x B
Distance W	3 x Sn
Distance S	1.5 x B
Distance G	6 x Sn
Distance N	1 x B
Width active area B	26 mm

Screwed on acc. to
DIN 6912 Allen screw
M4 x 30 included in scope of supply.
DIN 84 slotted screw
Not included in scope of supply.