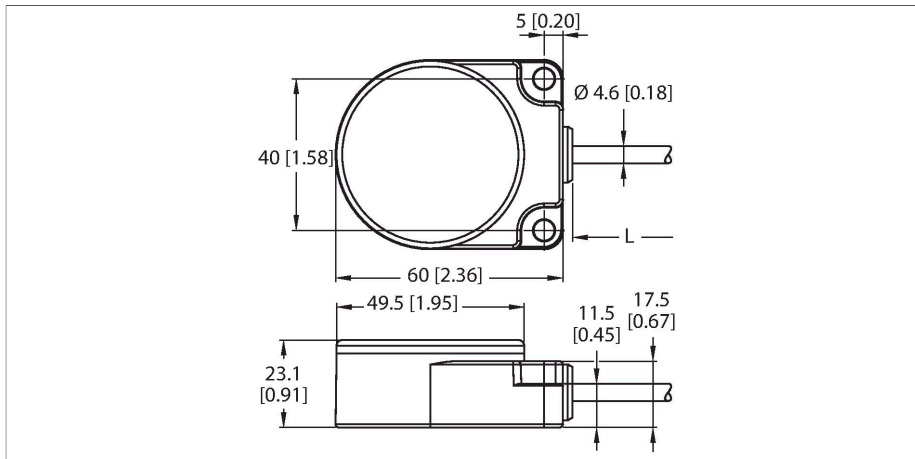


GPS50M

GPS Receiver – With Serial Interface

RS485-Schnittstelle - unterstützt Modbus RTU



Features

- Rugged housing in IP67/IP69K protection class
- Cable, PVC, 2 m with open ends
- SiRF Star IV GPS Chip
- Extension systems WAAS, EGNOS, MSAS, GAGAN
- Signal reception up to -163 dBm
- Update rate: 1 Hz
- Position detection accurate to 10 m (without auxiliary system)
- Position detection accurate to 2.5 m (with auxiliary system)
- Energy saving on/off
- Modbus RTU communication via RS485
- Baud rates: 9.6 k, 19.2 k (standard) or 38.4 k

Technical data

Type	GPS50M
ID	3088289
Wireless data	
Function	Positioning
Device type	Sensor
I/O data	
Communication protocol	Modbus RTU RS485
Electrical data	
runs with battery	nein
Operating voltage	5...30 VDC
DC rated operational current	≤ 10 mA
Power-on indication	LED, Green
Mechanical data	
Design	Puck, GPS50M
Housing material	Plastic, Black
Antenna connection	No radio participant
Ambient temperature	-40...+85 °C
Relative humidity	0...95 %
Protection class	IP69
Tests/approvals	

Functional principle

The GPS modules allow global positioning. The accuracy is 2.5 m, if the auxiliary systems are used. Recorded are the length, width, height, GPS data and time, signal strength and the number of available satellites. The data is read out via the RS485 interface.

Norms:

Shock and vibration resistant: IEC 68-2-6 and IEC 68-2-7

Shock: 30 g, 11 ms half wave, 18 shocks

Vibration: 0.5 mm peak to peak, 10 to 60 Hz