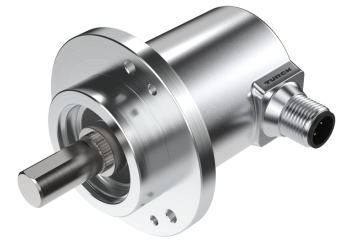
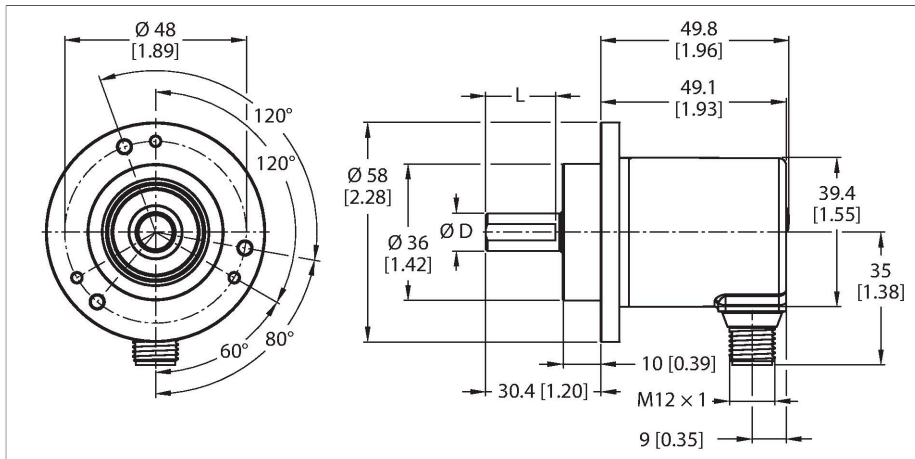


# REM-E-195T6C-IOL32B-H1141

## Absolute Rotary Encoder - Multiturn – IO-Link

### Efficiency Line



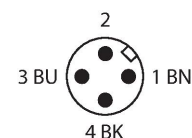
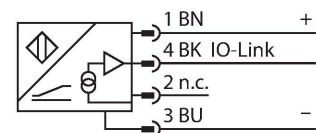
#### Technical data

Type	REM-E-195T6C-IOL32B-H1141
ID	100021185
Measuring principle	Magnetic
<b>General data</b>	
Max. Rotational Speed	4000 rpm
Repetition accuracy	$\pm 0.2^\circ$
Absolute accuracy	$\pm 0.5^\circ$
Output type	Absolute multiturn
<b>Electrical data</b>	
Operating voltage	18...30 VDC
No-load current	30 mA
Short-circuit protection	yes
Wire breakage/Reverse polarity protection	yes
Communication protocol	IO-Link
<b>IO-Link</b>	
IO-Link specification	V 1.1
Programming	FDT/DTM
<b>Mechanical data</b>	
Design	Solid shaft
Flange type	Clamping flange
Flange diameter	$\varnothing 58$ mm
Shaft Type	Solid shaft
Shaft diameter D [mm]	6
Shaft Length L [mm]	12.5
Shaft material	Stainless steel

#### Features

- Clamping flange,  $\varnothing 58$  mm
- Solid shaft,  $\varnothing 6$  mm  $\times$  12.5 mm
- Magnetic measuring principle
- Shaft material: stainless steel
- Protection class IP64 on housing and shaft side
- $-20...+70^\circ\text{C}$
- Max. 4000 rpm (continuous operation 2000 rpm)
- Energy harvesting technology
- 18...30 VDC
- M12  $\times$  1 male connector, 4-pin
- Singleturn resolution 14 bit scalable, default 14 bit
- Multiturn resolution scalable only to 18 bits over total resolution, default 18 bits
- Total resolution 32 bit scalable, default 32 bit

#### Wiring diagram



## Technical data

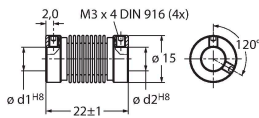
Housing material	Die-cast zinc
Electrical connection	Connector, M12 × 1
	5-pin
Axial shaft load	40 N
Radial shaft load	80 N
<b>Environmental conditions</b>	
Ambient temperature	-20...+70 °C
Vibration resistance (EN 60068-2-6)	30 g (300 m/s <sup>2</sup> ), 10...2000 Hz
Shock resistance (EN 60068-2-27)	500 g (2500 m/s <sup>2</sup> ), 4 ms
Protection class	IP64
Protection class shaft	IP64
MTTF	25 years

## Accessories

RCS-15-08-06

1545361

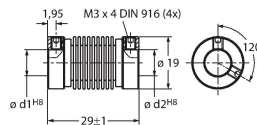
Bellows coupling, outer diameter:  
15 mm, bore diameter: 8 mm/6 mm



RCS-19-10-06

1545358

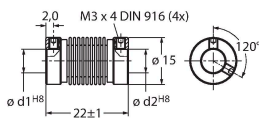
Bellows coupling, outer diameter:  
19 mm, bore diameter: 10 mm/6 mm



RCS-15-06-06

1545362

Bellows coupling, outer diameter:  
15 mm, bore diameter: 6 mm/6 mm



RCS-19-06-06

1545360

Bellows coupling, outer diameter:  
19 mm, bore diameter: 6 mm/6 mm

