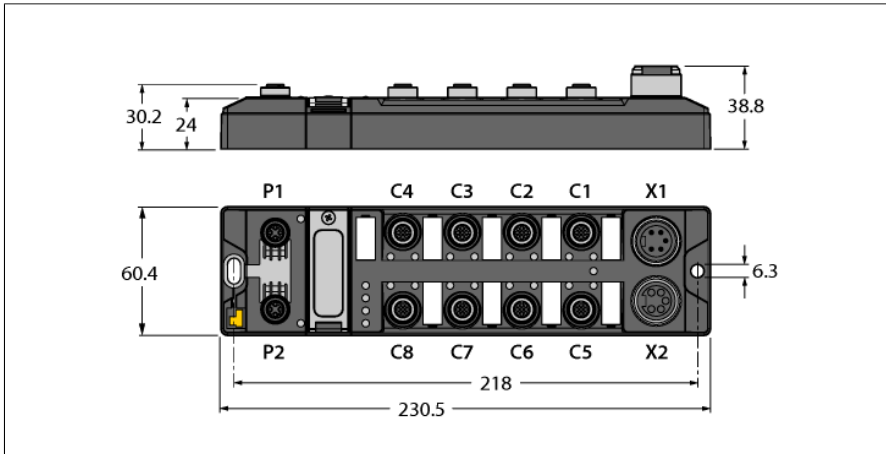


Compact multiprotocol I/O module for Ethernet

8 Digital PNP Inputs and 8 Digital PNP Outputs 2 A

TBEN-L1-8DIP-8DOP-01

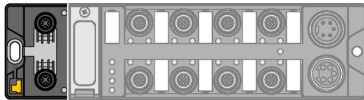


Type	TBEN-L1-8DIP-8DOP-01
ID	6814070
Supply	
Supply voltage	24 VDC
Admissible range	18...30 VDC Total current max. 9 A per voltage group Total current V1 + V2 max. 11 A
Voltage supply connection	5-pin male 7/8" connector X1
Operating current	V1: max. 150 mA
Sensor/actuator supply	supply of ports C1-C4 from V1 short-circuit proof, 120 mA per port
Electrical isolation	galvanic isolation of the voltage groups V1 and V2, voltages up to 500 VAC
System data	
Fieldbus transmission rate	10/100 Mbps
Fieldbus connection technology	2 × M12, 4-pin, D-coded
Protocol detection	automatic
Web server	Default: 192.168.1.254
Service interface	Ethernet via P1 or P2
Modbus TCP	
Addressing	Static IP, DHCP
Supported function codes	FC1, FC2, FC3, FC4, FC5, FC6, FC15, FC16, FC23
Number of TCP connections	8
Input register start address	0 (0x0000 hex)
Output register start address	2048 (0x0800 hex)
Ethernet/IP	
Addressing	acc. to EtherNet/IP specification
Quick Connect (QC)	< 150 ms
Device Level Ring (DLR)	supported
Class 3 connections (TCP)	3
Class 1 connections (CIP)	10
Input Assembly Instance	101
Output Assembly Instance	102
Configuration Assembly Instance	106

- PROFINET device, EtherNet/IP device or Modbus TCP slave
- Integrated Ethernet switch
- Supports 10 Mbps / 100 Mbps
- 2x M12, 4-pin, D-coded, Ethernet fieldbus connection
- Glass fiber reinforced housing
- Shock and vibration tested
- Fully potted module electronics
- Protection classes IP65, IP67, IP69K
- Input diagnostics per port
- Max. 2 A per output
- Output diagnostics per channel
- Ports C5–C8: Pin 1 not connected

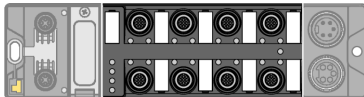
PROFINET	
Addressing	DCP
Conformance class	B (RT)
MinCycleTime	1 ms
Fast Start-Up (FSU)	< 150 ms
Diagnostics	acc. to PROFINET alarm handling
Topology detection	supported
Automatic addressing	supported
Media Redundancy Protocol (MRP)	supported
Digital inputs	
Number of channels	8
Connectivity inputs	M12, 5-pin
Input type	PNP
Type of input diagnostics	Group diagnostics
Switching threshold	EN 61131-2 Typ 3, PNP
Low-level signal voltage	< 5 V
High level signal voltage	> 11 V
Low level signal current	< 1.5 mA
High level signal current	> 2 mA
Input delay	2.5 ms
Electrical isolation	Galvanically isolated to the fieldbus Voltage proof up 500 VDC
Digital outputs	
Number of channels	8
Connectivity outputs	M12, 5-pin
Output type	PNP
Type of output diagnostics	Channel diagnostics
Output voltage	24 VDC from potential group
Output current per channel	2.0 A per port, short-circuit proof
Output delay	1.3 ms
Load type	EN 60947-5-1: DC-13
Short-circuit protection	yes
Electrical isolation	Galvanically isolated to the fieldbus Voltage proof up 500 VDC
Standard/Directive conformity	
Vibration test	Acc. to EN 60068-2-6 Acceleration up to 20 g
Shock test	acc. to EN 60068-2-27
Drop and topple	acc. to EN 60068-2-31/IEC 60068-2-32
Electromagnetic compatibility	Acc. to EN 61131-2
Approvals and certificates	CE FCC statement, UV resistant acc. to DIN EN ISO 4892-2A (2013)
UL Certificate	cULus LISTED 21 W2, Encl.Type 1 IND.CONT.EQ.

General Information	
Dimensions (W x L x H)	60.4 x 230.5 x 38.8 mm
Ambient temperature	-40...+70 °C
Storage temperature	-40...+85 °C
Altitude	Max. 5000 m
Protection class	IP65 IP67 IP69K
MTTF	205 years acc. to SN 29500 (Ed. 99) 20 °C
Housing material	PA6-GF30
Housing color	Black
Male connector material	Nickel-plated brass
Window material	Lexan
Material screw	303 stainless steel
Material label	Polycarbonate
Halogen-free	yes
Mounting	2 mounting holes □ 6.3 mm



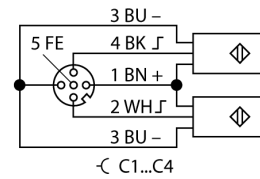
Note
 Ethernet cable (example):
 RSSD-RSSD-441-2M/S2174
 Ident. no. 6914218

M12 x 1 Ethernet

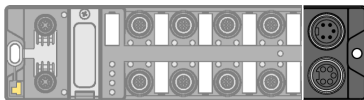
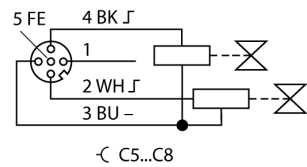


Note
 Actuator and sensor cable / PUR connection cable (for example):
 RKC4.4T-2-RSC4.4T/TXL
 Ident. no. 6625608
 Y extension cable for single occupancy
 FSM4-2WAK3-1/1/P00
 Ident. no. 8009560

M12 x 1 Input

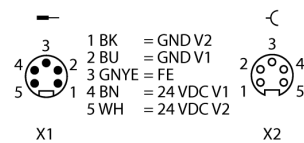


M12 x 1 Output



Note
 Power supply cable (example):
 RKM52-1-RSM52
 Ident. no. 6914149

7/8" Power Supply



Module Status LED

LED	Color	Status	Description
ETH1 / ETH2	Green	On	Ethernet Link (100 Mbps)
		Flashing	Ethernet communication (100 Mbps)
	yellow	On	Ethernet link (10 Mbps)
		Flashing	Ethernet communication (10 Mbps)
		Off	No Ethernet link
BUS	Green	On	Active connection to a master
		Flashing	Steady flashing: Ready Sequence of 3 flashes in 2 seconds: FLC/ARGEE active
	Red	On	IP-address conflict or Restore Mode or Modbus timeout
		Flashing	Blink/Wink command active
	Green/Red	Alternating	Autonegotiation and/or waiting for DHCP/Boot-P addressing
		Off	Power off
ERR	Green	ON	Diagnostics disabled
	Red	ON	Diagnostics enabled
PWR	LED response parameter (PWR) at V_2 undervoltage = "red"		
	Green	On	V_1 and V_2 power supply OK
	Red	On	V_2 power supply off or V_2 undervoltage
		Off	V_1 power supply off or V_1 undervoltage
	LED response parameter (PWR) at V_2 undervoltage = "green"		
	Green	On	V_1 and V_2 power supply OK
		Flashing	V_2 power supply off or V_2 undervoltage
		Off	V_1 power supply off or V_1 undervoltage

LED Status I/O

LED	Color	Status	Description
LED 1 ... 8	Green	ON	Input active
	Red	flashing	Power overload at the corresponding port. Both port LEDs are flashing.
		OFF	Input inactive
LED 9 ... 16	Green	ON	Output active
	Red	ON	Output active with overload / short circuit
		Flashing	Power overload at the corresponding port. Both port LEDs are flashing.
		OFF	Output inactive

Process Data Mapping of the Single Protocols

For more details on the corresponding protocols see manual.

Modbus TCP Register Mapping

	Reg	Bit 15	Bit 14	Bit 13	Bit 12	Bit 11	Bit 10	Bit 9	Bit 8	Bit 7	Bit 6	Bit 5	Bit 4	Bit 3	Bit 2	Bit 1	Bit 0
Inputs (RO)	0x0000									DI8 C4P2	DI7 C4P4	DI6 C3P2	DI5 C3P4	DI4 C2P2	DI3 C2P4	DI2 C1P2	DI1 C1P4
Status (RO)	0x0001	-	FCE	-	-	CFG	COM	V1	-	V2	-	-	-	-	-	-	Diag Warn
Diag (RO)	0x0002	-	-	-	-	-	-	-	-	-	-	-	-	-	-	-	I/O Diag
Inputs (RW)	0x0800									DI8 C4P2	DI7 C4P4	DI6 C3P2	DI5 C3P4	DI4 C2P2	DI3 C2P4	DI2 C1P2	DI1 C1P4
Outputs (RW)	0x0800									DO16 C8P2	DO15 C8P4	DO14 C7P2	DO13 C7P4	DO12 C6P2	DO11 C6P4	DO10 C5P2	DO9 C5P4
I/O Diag (RO)	0xA000	SCO16	SCO15	SCO14	SCO13	SCO12	SCO11	SCO10	SCO9	SCS4	SCS7	SCS6	SCS5	SCS4	SCS3	SCS2	SCS1

EtherNet/IP™ data mapping with activated scheduled diagnostics, default settings

	Word	Bit 15	Bit 14	Bit 13	Bit 12	Bit 11	Bit 10	Bit 9	Bit 8	Bit 7	Bit 6	Bit 5	Bit 4	Bit 3	Bit 2	Bit 1	Bit 0
Input data (station -> scanner)																	
GW status	0	-	FCE	-	-	CFG	COM	V1	-	V2	-	-	-	-	-	-	Diag Warn
Inputs	1									DI8 C4P2	DI7 C4P4	DI6 C3P2	DI5 C3P4	DI4 C2P2	DI3 C2P4	DI2 C1P2	DI1 C1P4
Diag 1	2	-	-	Sched Diag	-	-	-	-	-	-	-	-	-	-	-	-	I/O Diag
Diag 2	3	SCO16	SCO15	SCO14	SCO13	SCO12	SCO11	SCO10	SCO9	SCS8	SCS7	SCS6	SCS5	SCS4	SCS3	SCS2	SCS1
Output data (scanner -> station)																	
Control	0	reserved															
Outputs	1									DO16 C8P2	DO15 C8P4	DO14 C7P2	DO13 C7P4	DO12 C6P2	DO11 C6P4	DO10 C5P2	DO9 C5P4

EtherNet/IP™ data mapping with activated summarized diagnostics

	Word	Bit 15	Bit 14	Bit 13	Bit 12	Bit 11	Bit 10	Bit 9	Bit 8	Bit 7	Bit 6	Bit 5	Bit 4	Bit 3	Bit 2	Bit 1	Bit 0
Input data (station -> scanner)																	
GW status	0	-	FCE	-	-	CFG	COM	V1	-	V2	-	-	-	-	-	-	Diag Warn
Inputs	1									DI8 C4P2	DI7 C4P4	DI6 C3P2	DI5 C3P4	DI4 C2P2	DI3 C2P4	DI2 C1P2	DI1 C1P4
Diag 1	2																I/O Diag
Output data (scanner -> station)																	
Control	0	reserved															
Outputs	1									DO16 C8P2	DO15 C8P4	DO14 C7P2	DO13 C7P4	DO12 C6P2	DO11 C6P4	DO10 C5P2	DO9 C5P4

PROFINET process data

	Byte	Bit 7	Bit 6	Bit 5	Bit 4	Bit 3	Bit 2	Bit 1	Bit 0
Inputs	0	DI8	DI7	DI6	DI5	DI4	DI3	DI2	DI1
		C4P2	C4P4	C3P2	C3P4	C2P2	C2P4	C1P2	C1P4
Outputs	0	DO16	DO15	DO14	DO13	DO12	DO11	DO10	DO9
		C8P2	C8P4	C7P2	C7P4	C6P2	C6P4	C5P2	C5P4

Key:

DIx	Digital input channel x	CFG	I/O Configuration error
DOx	Digital output channel x	FCE	I/O-ASSISTANT Force Mode active
Cx	Port x	I/ODiag	I/O diagnostics connected
Px	Pin x	SchedDiag	Manufacturer-specific diagnostics configured and active
DiagWarn	Diagnostic at least on 1 channel	SCSx	Short-circuit at port x
V1	Undervoltage V1	SCG1	Short-circuit supply ports C1-C4
V2	Undervoltage V2	SCG2	Short-circuit supply ports C5-C8
COM	Communication error on internal module bus	SCOx	Short-circuit output channel x
SPEx	Spanner port active		