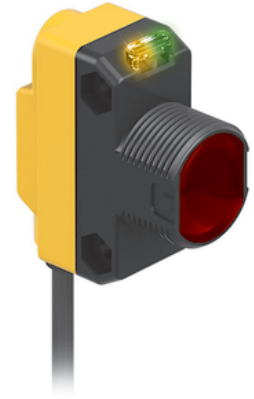


QS18WE

Photoelectric Sensor – Opposed Mode Sensor (Emitter)

Technical data

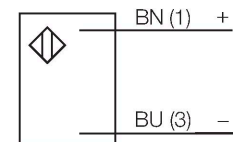
Type	QS18WE
ID no.	3079603
Optical data	
Function	Opposed mode sensor
Operating mode	Emitter
Light type	IR
Wavelength	940 nm
Range	0...20000 mm
Electrical data	
Operating voltage	20...270 VDC
Operating voltage	20...270 VAC
Residual ripple	< 10 % U _{ss}
DC rated operational current	≤ 100 mA
Short-circuit protection	yes
Reverse polarity protection	yes
Readiness delay	≤ 100 ms
Response time typical	< 16.6 ms
Mechanical data	
Design	Rectangular with thread, QS18
Dimensions	Ø 18 x 31 x 15 x 35 mm
Housing material	Plastic, ABS
Lens	plastic, PMMA
Electrical connection	Cable, 2 m, PVC
Number of cores	2
Core cross-section	0.35 mm ²
Ambient temperature	-25...+70 °C
Protection class	IP67
Power-on indication	LED, Green
Excess gain indication	LED
Tests/approvals	
MTTF	530 years acc. to SN 29500 (Ed. 99) 40 °C
Approvals	CE, cURus



Features

- Cable, PVC, 2 m
- Protection class IP67
- LED all-round visible
- Operating voltage: 20...270 VDC AC/DC

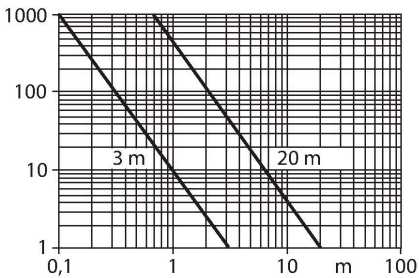
Wiring diagram



Functional principle

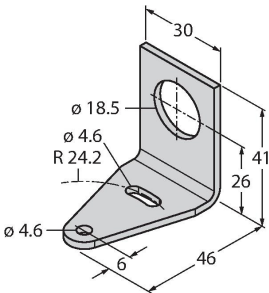
Opposed mode sensors consist of an emitter and receiver. They are installed opposite to each other so that the light from the emitter is aimed directly at the receiver. When an object interrupts or weakens the light beam, the sensor switches. Opposed mode sensors are the most reliable photoelectric sensors for detection of opaque targets. The excellent light/dark contrast and the high excess gain allow operation over larger distances and under difficult conditions.

Excess gain curve
Excess gain in relation to the distance (type 6EB/RB)



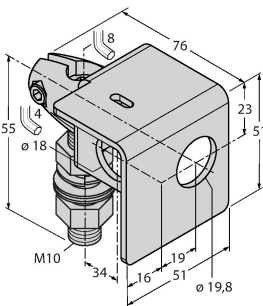
Accessories

SMB18A 3033200



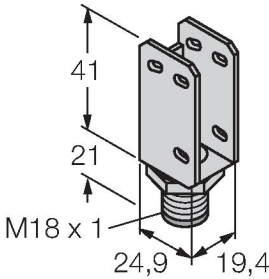
Mounting bracket, rectangular, stainless steel, for sensors with 18 mm thread

SMB18AFAM10 3012558



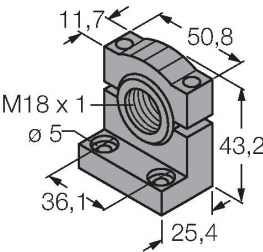
Mounting bracket, material VA 1.4401, for M10 x 1.5 thread, thread length 18 mm

SMBQS18A 3069721



Mounting bracket, stainless steel, for 18 mm thread

SMB18SF 3052519



Mounting bracket, PBT black, for sensors with 18 mm thread, rotatable