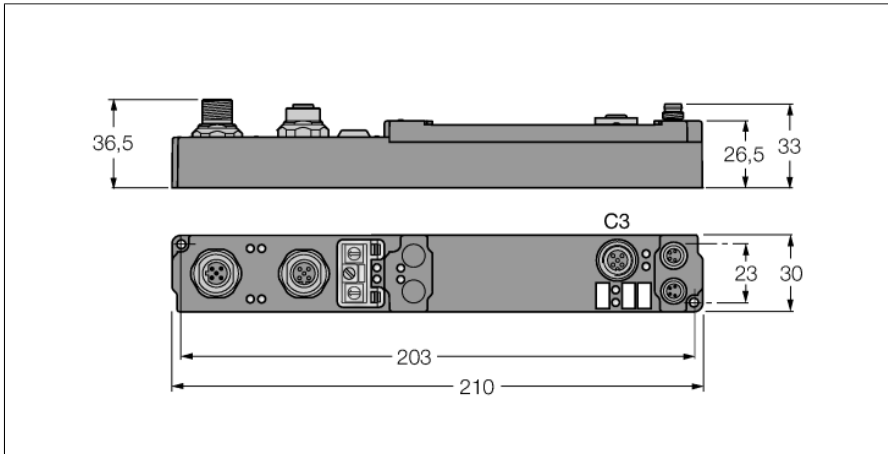


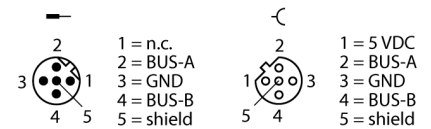
piconet stand-alone module for PROFIBUS-DP Single Channel Serial Interface 0...20 mA (TTY) SDPB-10S-1003



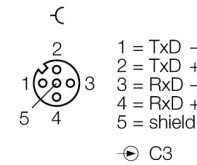
- Serial interface 0...20 mA (TTY)
- 1-channel
- Configuration interface
- Parameterizable functions
- Supported via I/O-ASSISTANT 2
- Direct connection to the fieldbus
- Fibre-glass reinforced housing
- Shock and vibration tested
- Encapsulated module electronics
- Metal connector
- Degree of protection IP67

Type	SDPB-10S-1003
ID	6824447
Number of channels	1
Operating / load voltage	20...29 VDC
Operating current	≤ 40 mA
Fieldbus transmission rate	9.6 kbps ... 12 Mbps
Fieldbus addressing	0 to 99
Service interface	parameterisation via I/O-ASSISTANT
Electrical isolation	Fieldbus to operational voltage
Low level signal current	0 to 3 mA
High level signal current	14 to 20 mA
Load resistance	≤ 500 Ω
Bit transfer	2 x 20 mA
Transmission rate	1.2 to 19.2 kBit/s (default 9.6 kbps)
Transfer circuit	twisted pair ≤ 1000 m
Data buffer	128 byte receive buffer, 16 byte send buffer
Potential separation	operational voltage to TTY
Dimensions (W x L x H)	30 x 210 x 26.5 mm
Vibration test	Acc. to EN 60068-2-6
Shock test	acc. to DIN EN 60068-2-27
Electromagnetic compatibility	Acc. to EN 61000-6-2/EN 61000-6-4
Protection class	IP67
Approvals	CE, cULus

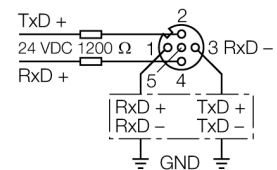
M12 × 1 Fieldbus



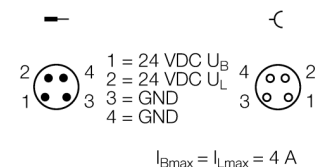
M12 × 1 Input



Connection - Passive TTY Devices



M8 × 1 Power Supply



Data in process image

	Address	Input data		Output data	
Pre-conditions	Word	High-Byte	Low-Byte	High-Byte	Low-Byte
Complex mapping: Data are mapped with control and status byte	0	D0	SB	D0	CB
	1	D2	D1	D2	D1
	2	D4	D3	D4	D3