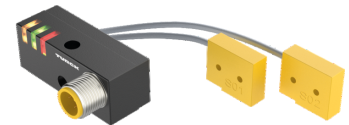
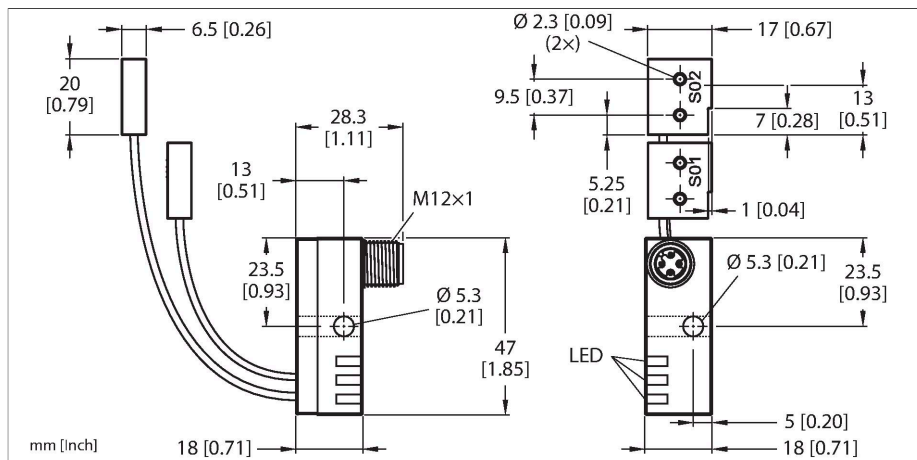


NI2-Q6.5-AN6-0.1-FS4.4X3/S304
Inductive Sensor – Monitoring Kit for Power Clamps



Technical data

Type	Ni2-Q6.5-AN6-0.1-FS4.4X3/S304
ID	1650079
Special version	S304 corresponds to: 2 × Ni../Bi../-AP(N)6/S34. Function for DeviceNet. Defined length at connector FS4.4/FS4.4K or FSF5.5/FSF5.5K (with PE connection) or FS4.4X3. Example for order : Ni2-Q6.5-AP6-0.1-FSF4.4X3/S304

General data

Rated switching distance	2 mm
Mounting conditions	Non-flush
Secured operating distance	$\leq (0.81 \times S_n)$ mm
Correction factors	St37 = 1; Al = 0.7; stainless steel = 0.75; Ms = 0.45
Repeat accuracy	≤ 2 % of full scale
Temperature drift	$\leq \pm 10$ %
Hysteresis	3... 15 %

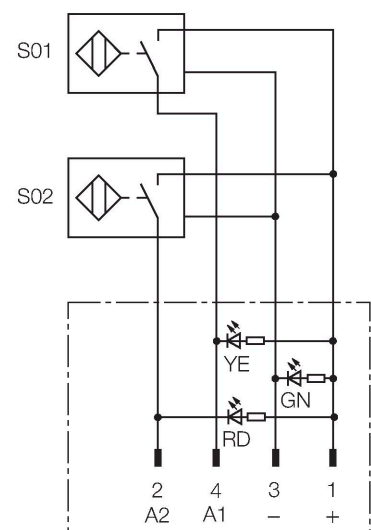
Electrical data

Operating voltage	10...30 VDC
Residual ripple	$\leq 10 \% U_{ss}$
DC rated operational current	$\leq 150 \text{ mA}$
No-load current	20 mA
Residual current	$\leq 0.1 \text{ mA}$
Isolation test voltage	$\leq 0.5 \text{ kV}$
Short-circuit protection	yes / Cyclic
Voltage drop at I_o	$\leq 1.8 \text{ V}$
Wire breakage/Reverse polarity protection	yes / Complete
Output function	4-wire, NO contact, NPN

Features

- Q6,5 power block with two connected sensors and LEDs
- Relocatable block 0°...90°, with cross drilling for flexible cable routing
- Plastic, PBT-GF20-V0
- Resistant to magnetic fields (weld-resistant), for DC and AC fields up to 100 mT
- 2 x NO contact, NPN output
- DC 4-wire, 10...30 VDC

Wiring diagram



Functional principle

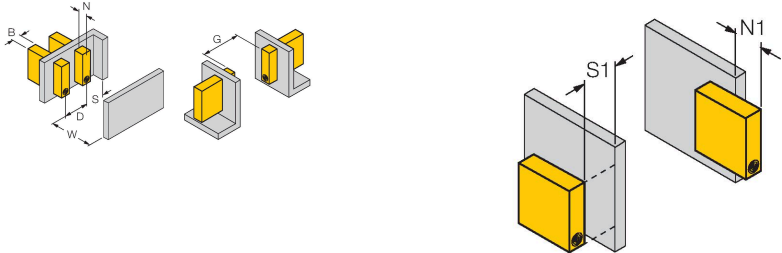
TURCK offers special monitoring kits, consisting of two miniature sensors, as a convenient solution for "Open/Closed" detection on pneumatic power clamps. This product line provides almost unlimited combination possibilities, comprising four

Technical data

Switching frequency	0.03 kHz
Mechanical data	
Design	Monitoring Kit for Spanners, Q6,5
Dimensions	47 x 18 x 18 mm
Housing material	Metal, PBT-GF20-V0
Active area material	Plastic, PP GR-15
Electrical connection	Connector, M12 x 1
Cable quality	Ø 2 mm, Gray, Lif9Y-11Y, PUR, 0.1 m
Core cross-section	3 x 0.08 mm ²
Litz wire	40 x0.05 mm
Environmental conditions	
Ambient temperature	-25...+70 °C
Vibration resistance	55 Hz (1 mm)
Shock resistance	30 g (11 ms)
Protection class	IP67
MTTF	2283 years acc. to SN 29500 (Ed. 99) 40 °C
Power-on indication	LED, Green
Switching state	2 x LEDs, Yellow/red
Included in delivery	Screw M5 x 25 DIN 912

different power blocks and over 40 different modular sensor types.

Mounting instructions

Mounting instructions/Description	
	
Distance D	3 x B
Distance W	3 x Sn
Distance S	1.5 x B
Distance G	6 x Sn
Distance N	2 x Sn
Width active area B	6.5 mm
Please note, non-flush mounting of this sensor is obligatory.	
The following conditions allow semi-flush mounting:	
N1 = 0 mm and S1 = 1 mm or N1 = 1 mm and S1 = 0 mm These values apply for mounting in aluminium	
N1 = 0 mm and S1 = 5 mm or N1 = 5 mm and S1 = 0 mm These values apply for mounting in St37.	