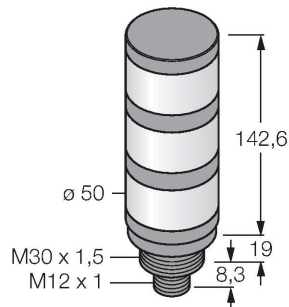


TL50GYR6PQ

LED Indicator – Tower Light



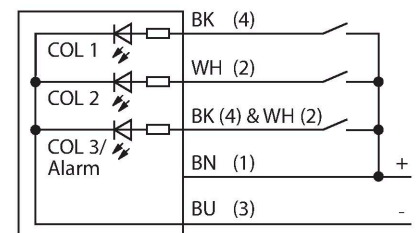
Technical data

Type	TL50GYR6PQ
ID	3802402
Signal and display data	
Purpose	LED indicator light
Function	Tower light
Dimmable	No
Electrical data	
Operating voltage	18...30 VDC
DC rated operational current	≤ 45 mA
Operating voltage	21...27 VAC
AC rated operational current	≤ 45 mA
Input type	PNP
Response time typical	< 10 ms
Mechanical data	
Cascadable	No
Design	Cylinder, threaded, TL50
Dimensions	Ø 50 x 142.6 mm
Housing material	Plastic, ABS
Window material	Plastic, diffuse
Electrical connection	Connector, M12 × 1
Ambient temperature	-40...+50 °C
Protection class	IP67
Tests/approvals	
Approvals	CE, UL listed

Features

- Plastic housing, black
- EMI and RFI immune
- Protection class IP67
- M12 × 1 male connector
- Colors: Green (COL 1)/Yellow (COL 2)/Red (COL 3)
- Operating voltage: 18...30 VDC or 24 VAC
- Integrated microcontroller
- Compatible with IO block
- Activation of the 3 colors via pin 2 and 4
- Inputs: PNP/NPN

Wiring diagram



Functional principle

The TL50 tower lights provide highly visible status indicators and a clear user guidance within the entire system. They can be assembled from varicolored LEDs and are available with or without beeper. You can mount them directly on machines, in the cabinet or in monitoring locations of production lines.

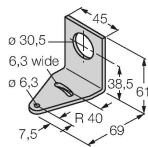
The wiring diagram shows a PNP pin assignment. There are 10 colors available blue (B), green (G), red (R), yellow (Y), white (W), turquoise (T), orange (O), violet (V), sky blue (S) and magenta (M), which specify the light sequence from bottom to top in the type code of the tower light. Example: TL50GYRQ, colors

green, yellow and red arranged from bottom to top.

Accessories

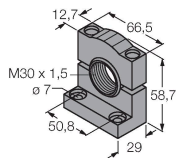
SMB30A 3032723

Mounting bracket, rectangular, stainless steel, for sensors with 30mm thread



SMB30SC 3052521

Mounting bracket, PBT black, for sensors with 30 mm thread, rotatable



SMB30FA 3074005

Montagewinkel; Werkstoff VA 1.4401

