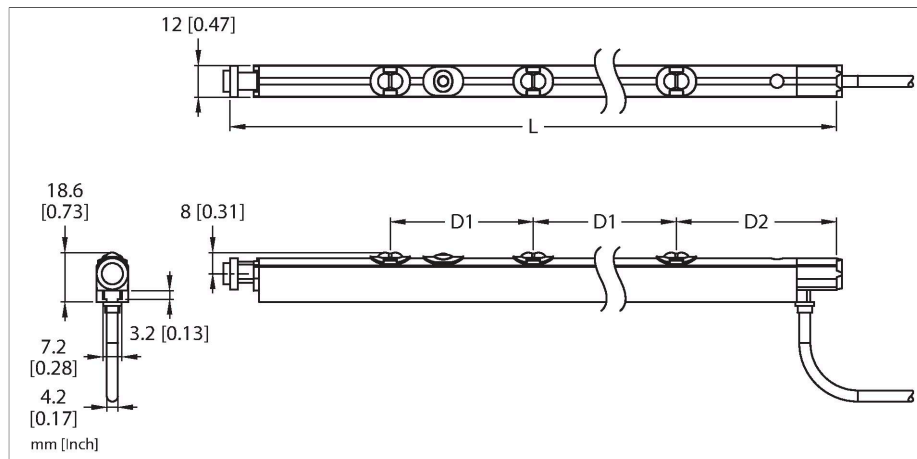


TTR600BMSB6B-2.0FL-CTR

Photoelectric Sensor – Reflex Light Grid

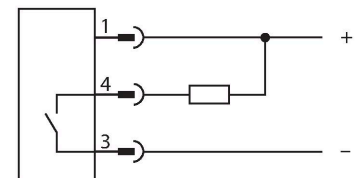
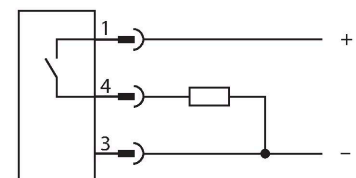
Roller Conveyor Sensor



Features

- Overall length/frame size "L": 600 mm
- Infrared light beams
- Range: 120 mm
- Beam distance "D1": 93.1 mm
- Beams centered between frames
- Operating voltage: 18...30 VDC
- Switching output: Bimodal (PNP/NPN)
- B-type end cap: 11-mm hexagonal shape, tip at the top and 11-mm hexagonal shape with 8-mm spring

Wiring diagram



Functional principle

The TTR roller conveyor sensors are designed to be used directly between the rollers on conveyor systems. The narrow cone angle of the light beams and the number of beams per sensor allow papers, packages, bags, etc. to be reliably detected. The sensors have a compact design and can be mounted in positions with restricted space without any additional accessories or by using mounting brackets for the T-grooves. The part key number allows you to select from a wide range of different sensors that can be precisely adapted to different customer requirements. For example, there are a variety of end caps to choose from. Information on both sides is provided above; the first side means the end cap at the cable outlet. For more information and other designs, please refer to the instruction leaflet.

Technical data

Type	TTR600BMSB6B-2.0FL-CTR
ID no.	3809793
Optical data	
Function	Proximity switch
Operating mode	Diffuse
Light type	IR
Wavelength	940 nm
Light spot diameter	12 mm
Optical resolution	93.1 mm
Range	0...120 mm
Number of beams	6
Scan Code	None
Electrical data	
Operating voltage	18...30 VDC
Residual ripple	< 10 % U _{ss}
DC rated operational current	≤ 45 mA
Short-circuit protection	yes
Reverse polarity protection	yes
Output function	Connection programmable, PNP/NPN
Switching frequency	≤ 1000 Hz
Readiness delay	≤ 1500 ms
Response time typical	< 1 ms
Mechanical data	
Design	Smooth barrel, TTR
Dimensions	600 x 12 x 18.6 mm
Housing material	Metal, AL, Black

Technical data

Lens	plastic, Polycarbonate
Cascadable	no
Electrical connection	Cable, Open end, 2 m, PVC
Number of cores	4
Ambient temperature	-10...+55 °C
Storage temperature	-10...+55 °C
Relative humidity	0...95 %
Protection class	IP50
Switching state	LED, Yellow
Tests/approvals	
Approvals	CE cULus